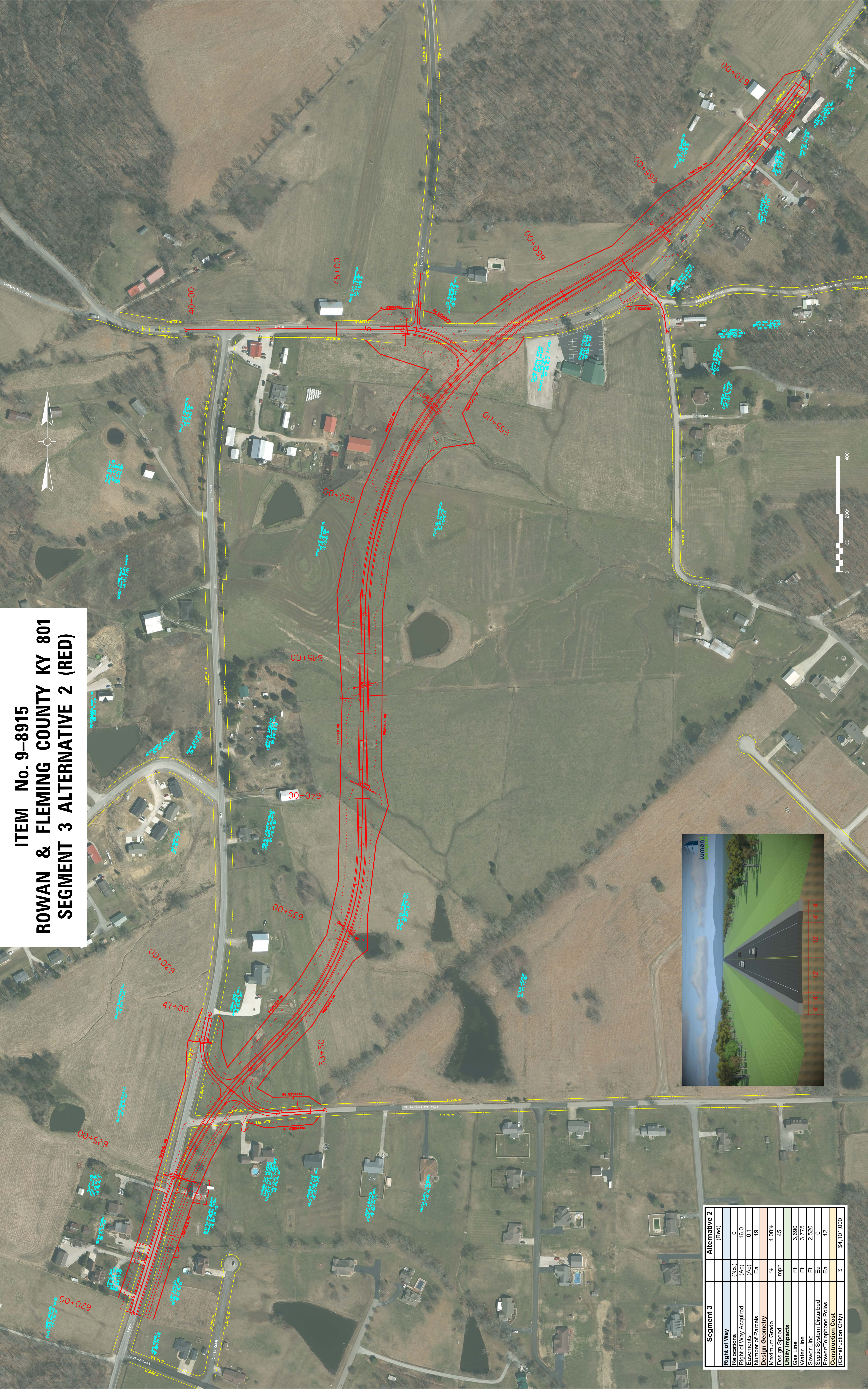


**ITEM No. 9-8915  
ROWAN & FLEMING COUNTY KY 801  
SEGMENT 3 ALTERNATIVE 2 (RED)**



|  | Segment 3 | Alternative 2<br>(Red) |
|--|-----------|------------------------|
| Right of Way                             | (No)      | 0                      |
| Relocations                              | (No)      | 0                      |
| Right of Way Acquired                    | (Ac)      | 18.0                   |
| Easements                                | (Ac)      | 0.1                    |
| Number of Parcels                        | Ea        | 19                     |
| Design Geometry                          | %         | 4.00%                  |
| Maximum Grade                            | mph       | 45                     |
| Utility Impacts                          |           |                        |
| Gas Line                                 | Ft        | 3,690                  |
| Water Line                               | Ft        | 3,775                  |
| Sewer Line                               | Ft        | 2,520                  |
| Power System Disturbed                   | Ea        | 0                      |
| Power/Telephone Poles                    | Ea        | 12                     |
| Construction Cost<br>(Construction Only) | \$        | \$4,101,000            |