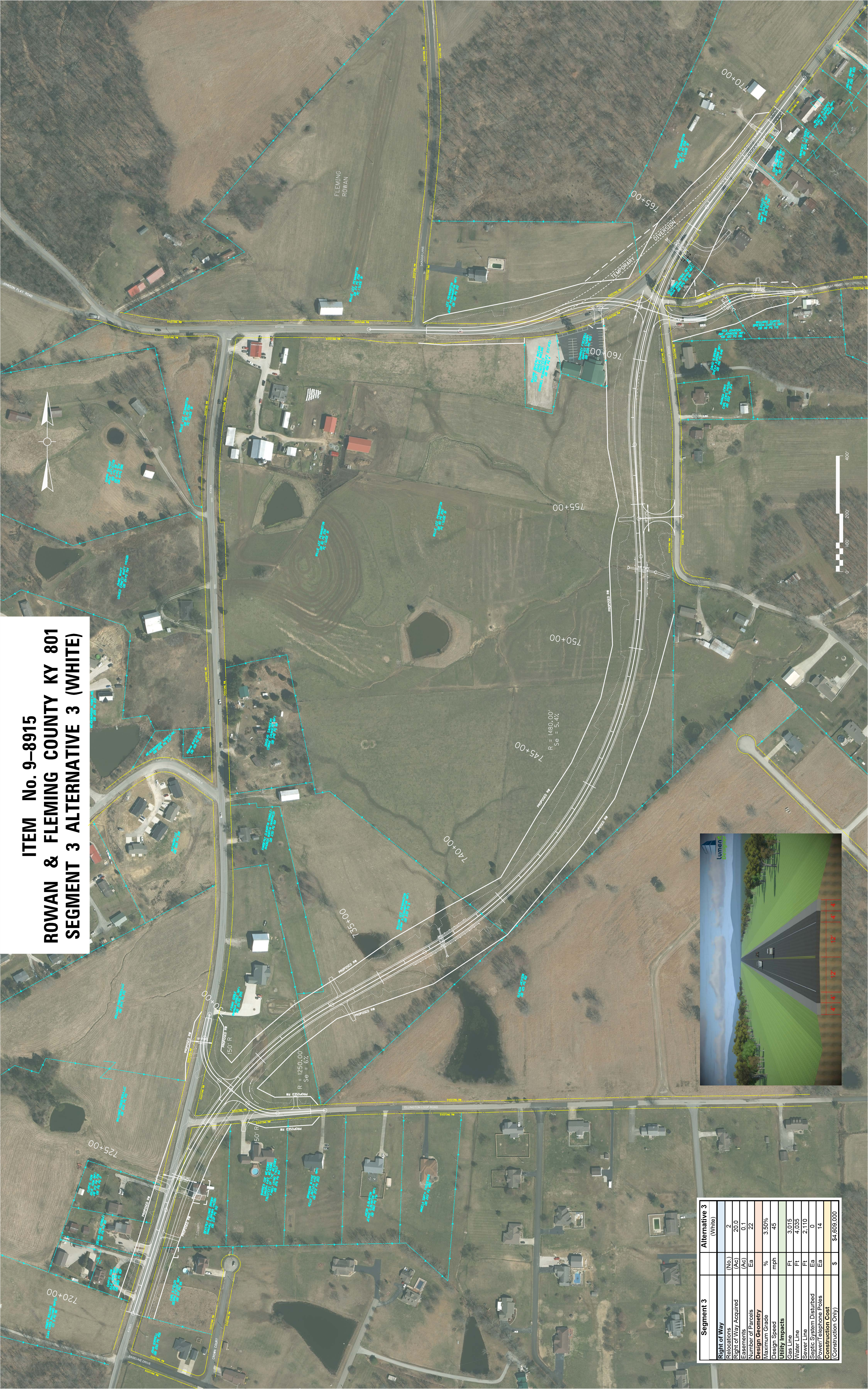


**ITEM No. 9-8915
ROWAN & FLEMING COUNTY KY 801
SEGMENT 3 ALTERNATIVE 3 (WHITE)**



Segment 3	Alternative 3 (White)
Right of Way Relocations (No.)	2
Right of Way Acquired (AC)	20.0
Easements (EA)	0.1
Number of Parcels	22
Design Geometry	% 3.50%
Maximum Grade	mph 45
Utility Impacts	
Gas Line	3,015 Ft
Water Line	4,035 Ft
Sewer Line	2,110 Ft
Septic System Disturbed	0 Ea
Power Telephone Poles	14 Ea
Construction Cost	\$ \$4,609,000